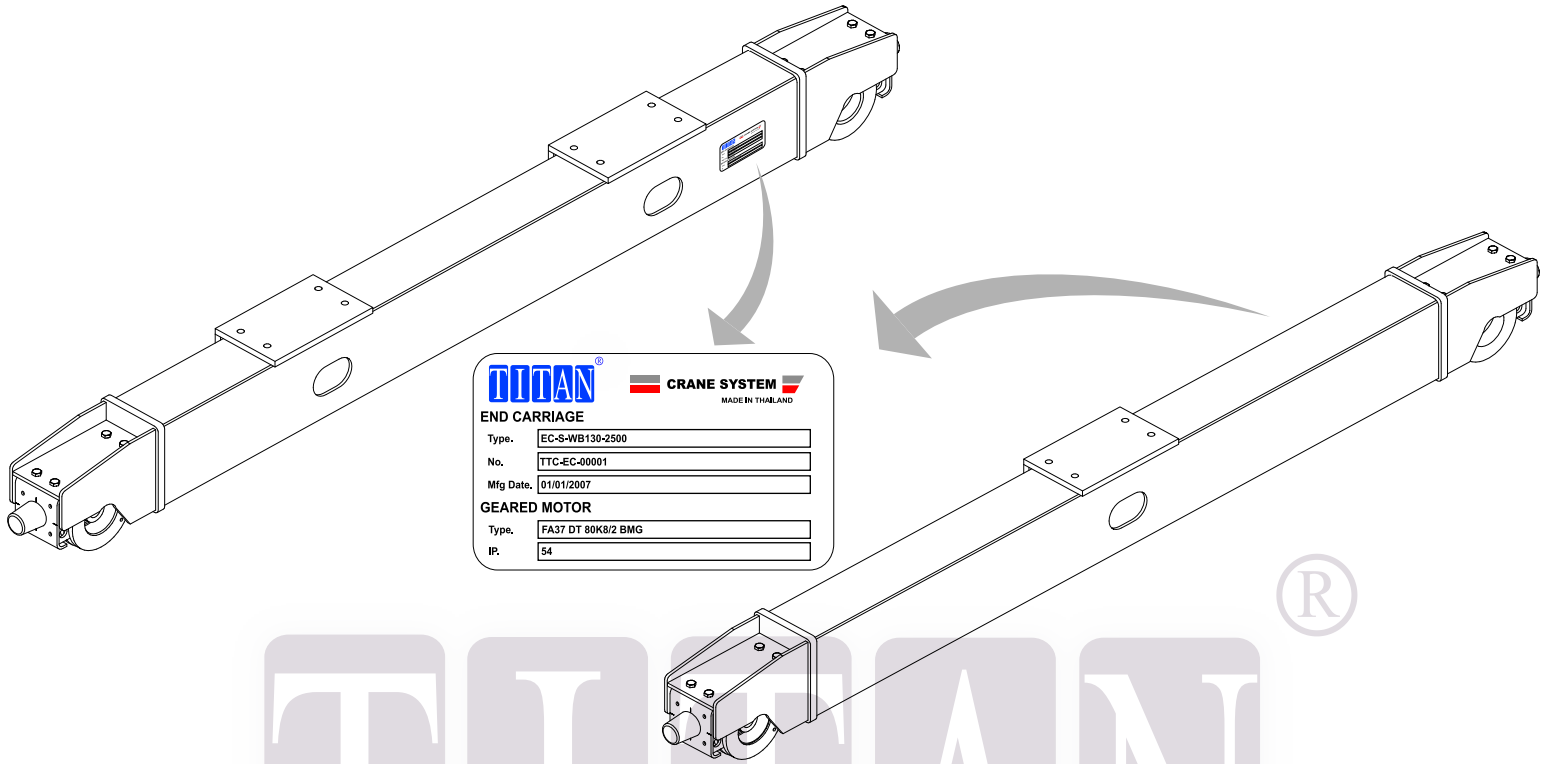


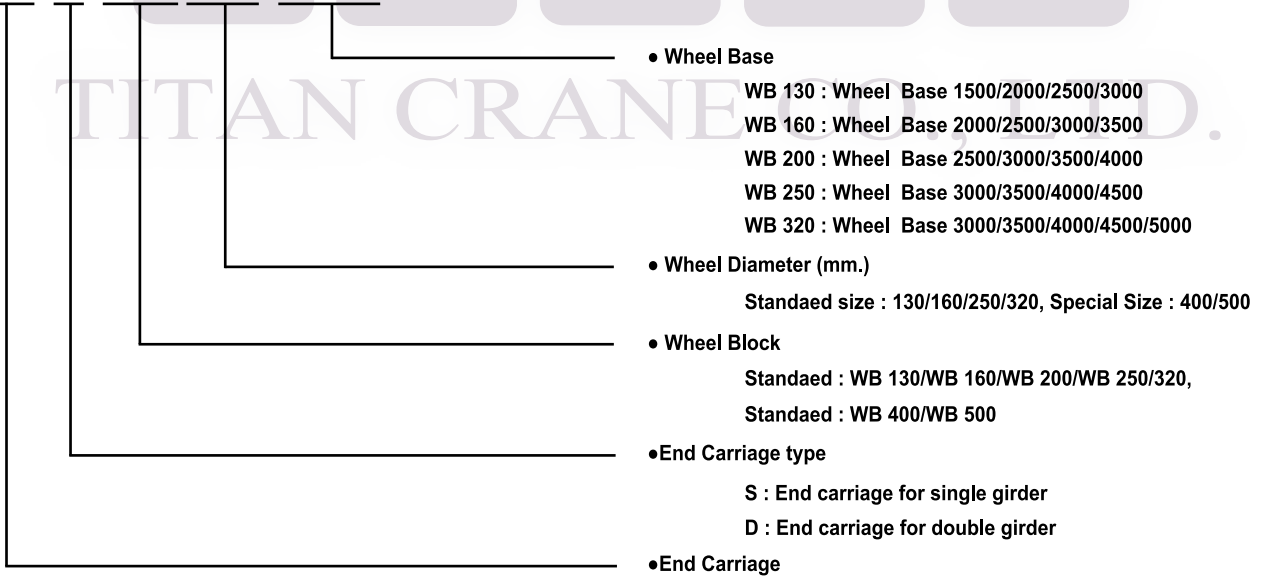
END CARRIAGE NAMEPLATE & MODEL CODE



HOW TO READ (EXAMPLE)

• END CARRIAGE

Type EC-S-WB130-2500
EC-S-WB130-2500



NO. **TTC - EC - 001**

- End Carriage Number of Products
- End Carriage
- Titan Crane Company Limited

Mfg Date **01/01/2007**

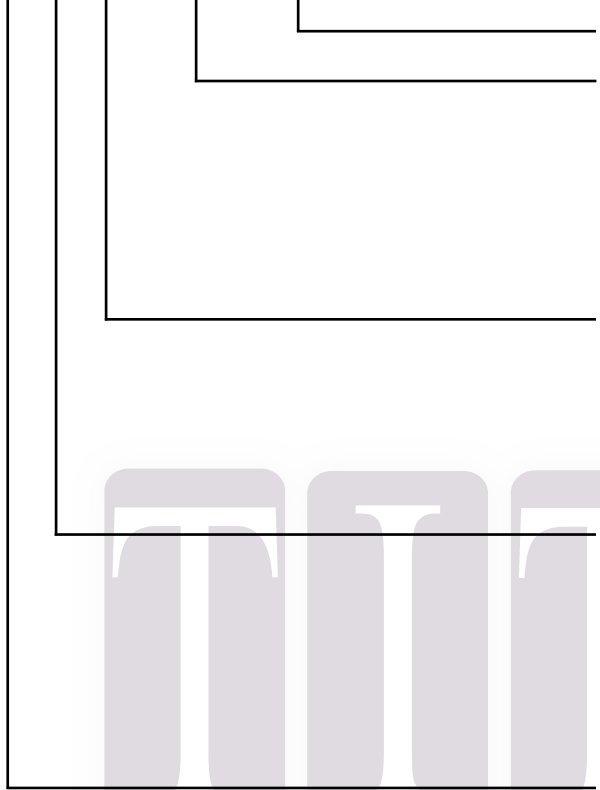
- Year
- Month
- Date

END CARRIAGE NAMEPLATE & MODEL CODE

• GEARED MOTOR

Type **FA37 DT 80K8/2 BMG**

FA 37 DT 80K8/2 BMG



- **Brake motor gear**

- **Motor frame size and number of pole**

WB 130 : Use 80K8/2

WB 160 : Use 80N8/2

WB 200 : Use 90S8/2

WB 250 : Use 90L8/2

WB 320 : Use 100LS8/2

- **Motor type**

- Standard AC motor, series

DT : Mount-on motor for gear unit use for WB130/WB160

- Pole changing AC motors, smooth type

SDT : Mount-on motor for gear unit use for WB200/WB250/WB320

- **Gear unit size**

WB 130 : Use size 37

WB 160 : Use size 47

WB 200 : Use size 57

WB 250 : Use size 67

WB 320 : Use size 77

- **Gear unit type**

FA : Hollow shaft

IP. 54

NAMEPLATE

Each series end carriage unit distributed from Titan Crane Company's works is fitted with nameplate which identify the characteristics of that particular model of end carriage.

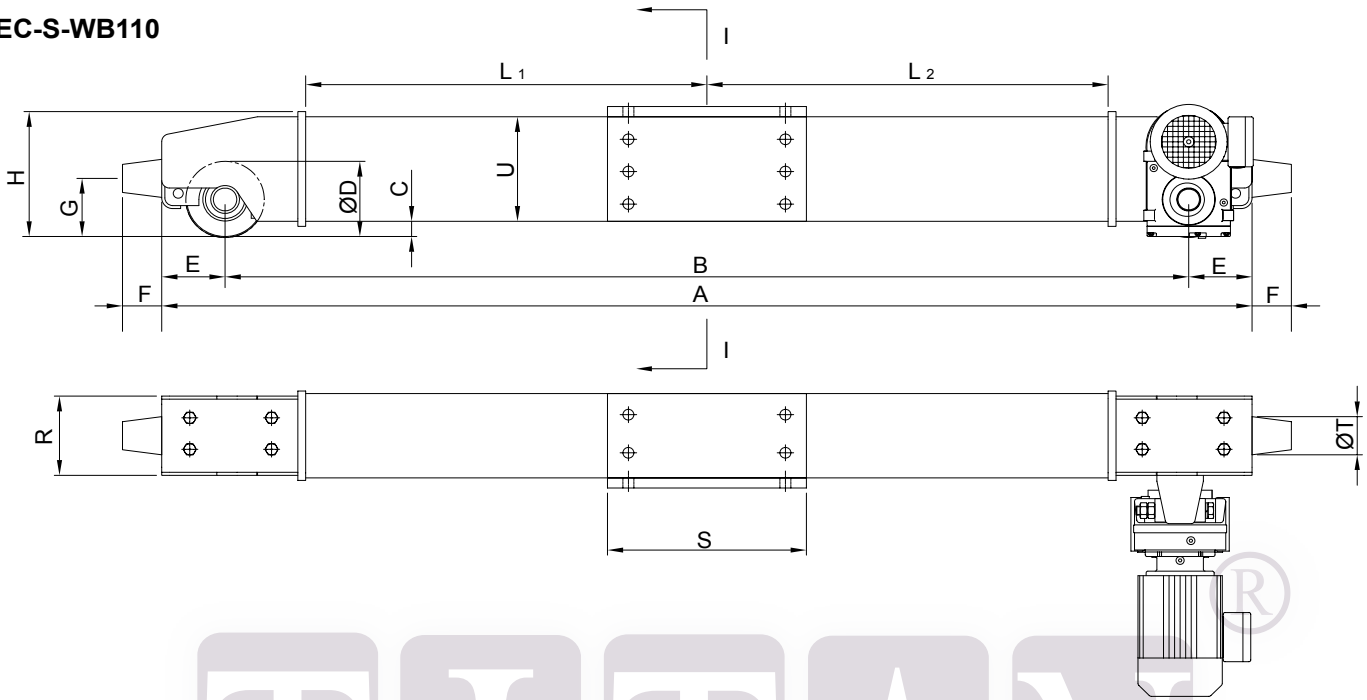
When ordering spare parts for the end carriage series unit please supply type a details from nameplate.

TITAN CRANE CO., LTD.

UPPER END CARRIAGE

Travelling gearing girder for single girder cranes

EC-S-WB110



DIMENSION IN MM.

TYPE	WHEEL BASE B (MM.)	DIMENSION IN MM.																	
		A	C	ØD	E	F	G	H	K	L ₁	L ₂	M	N	P	R	S	ØT	U	
BC-S-WB110-1500	1500	1700	25	110	100	40	92.5	195	454	618	618	1	160	48	142	300	40	160	
BC-S-WB110-2000	2000	2200	25	110	100	40	92.5	195	454	868	868	1	160	48	142	300	40	160	
BC-S-WB110-2500	2500	2742	25	110	100	40	92.5	195	454	1118	1118	1	160	48	142	300	40	160	
BC-S-WB110-3000	3000	3242	25	110	100	40	92.5	195	454	1368	1368	1	160	48	142	300	40	160	

SELECTION END CARRIAGE

TYPE	WHEEL BASE B (MM.)	Ø WHEEL (MM.)	RAIL SQ.BAR	LOADS/WHEEL (KG.)	CRANE SPAN MAX.(M.)	WEIGHT WITHOUT MOTOR DRIVE (KG.)
BC-S-WB110-1500	1500	110	38x38	1751	9	106
BC-S-WB110-2000	2000	110	38x38	1859	12	126
BC-S-WB110-2500	2500	110	38x38	1990	15	145
BC-S-WB110-3000	3000	110	38x38	2244	18	166

SELECTION TRAVEL DRIVE

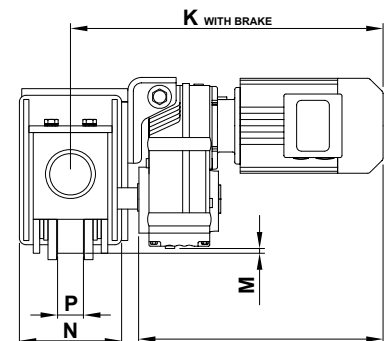
TRAVELLING SPEED (M/MIN)	MOTOR POWER (KW)	TITAN MODEL	TOTAL MASS (KG.)	PARALLEL KEYS SHAFT TYPE	MOTOR HOLDER TYPE	RUBBER BUFFER TYPE
8/32	0.05/0.20	FA27 DT80 K8/2BMG	28	APS 01	HBG 01	RB 01

STATIC VALUES

CROSS SECTION I-I	Ix (CM ⁴)	Iy (CM ⁴)	Zx (CM ³)	Zy (CM ³)
	2602	1555	253	199

SCOPE OF SUPPLY

1. WHEEL OF MATERIAL SCM 4140
2. WHEEL IS FLANGE GUIDE SURFACE HARDNESS HRC 50~55
3. PARALLEL KEYS DRIVE SHAFT IS SCM 4140 HARDNESS HRC 50~55
4. BEARING HOUSING OF MATERIAL S45C
5. OUTSIDE BEARING HOUSING IS VERY EAZY MAINTENANCE
6. LONG LIFT ANTI-FRICTION BEARING

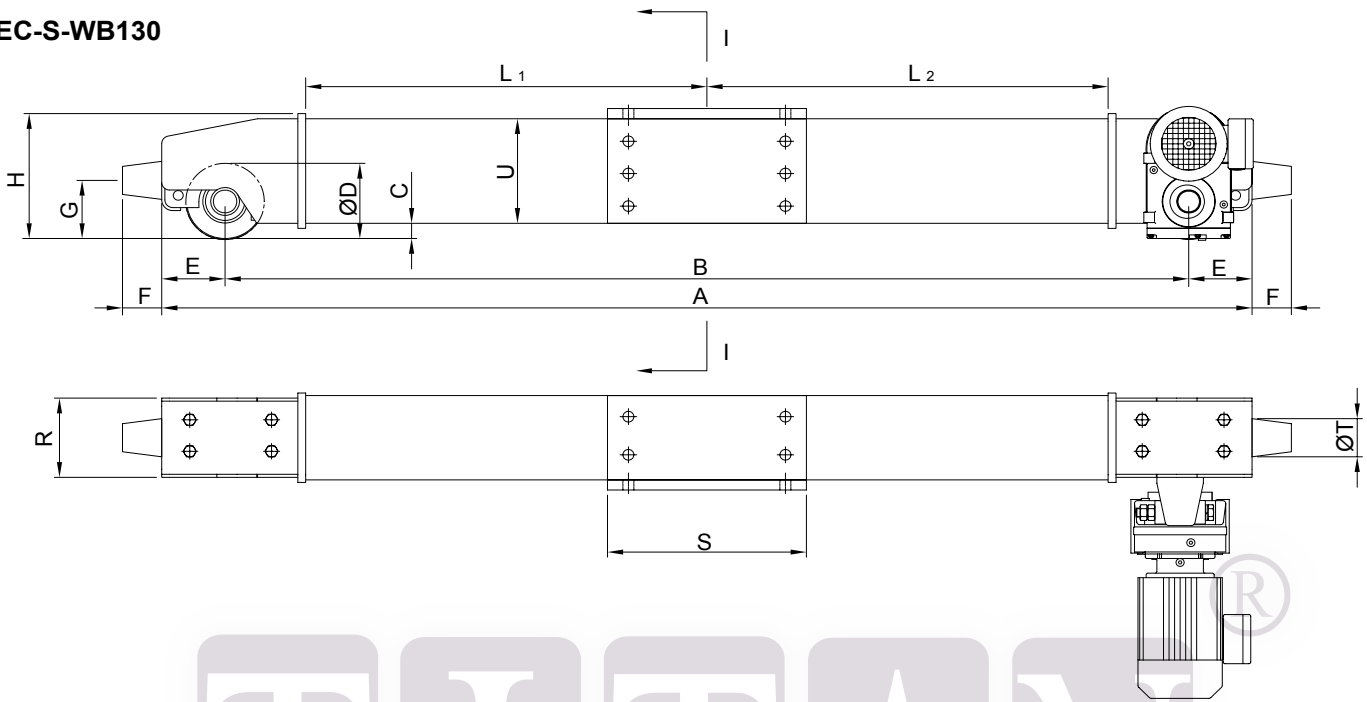


REMARK : DIMENSION ARE FOR ESTIMATE
PERPOSES AND NOT CERTIFIED DIMENSION.

UPPER END CARRIAGE

Travelling gearing girder for single girder cranes

EC-S-WB130



DIMENSION IN MM.

TYPE	WHEEL BASE B (MM.)	DIMENSION IN MM.																	
		A	C	ØD	E	F	G	H	K	L ₁	L ₂	M	N	P	R	S	ØT	U	
BC-S-WB130-1500	1500	1742	22	130	121	75	106.5	238	474.5	596	596	10.5	176	48	156	380	50	206	
BC-S-WB130-2000	2000	2242	22	130	121	75	106.5	238	474.5	846	846	10.5	176	48	156	380	50	206	
BC-S-WB130-2500	2500	2742	22	130	121	75	106.5	238	474.5	1096	1096	10.5	176	48	156	380	50	206	
BC-S-WB130-3000	3000	3242	22	130	121	75	106.5	238	474.5	1346	1346	10.5	176	48	156	380	50	206	

SELECTION END CARRIAGE

TYPE	WHEEL BASE B (MM.)	Ø WHEEL (MM.)	RAIL SQ.BAR	LOADS/WHEEL (KG.)	CRANE SPAN MAX.(m.)	WEIGHT WITHOUT MOTOR DRIVE (KG.)
BC-S-WB130-1500	1500	130	38x38	1751	9	106
BC-S-WB130-2000	2000	130	38x38	1859	12	126
BC-S-WB130-2500	2500	130	38x38	1990	15	145
BC-S-WB130-3000	3000	130	38x38	2244	18	166

SELECTION TRAVEL DRIVE

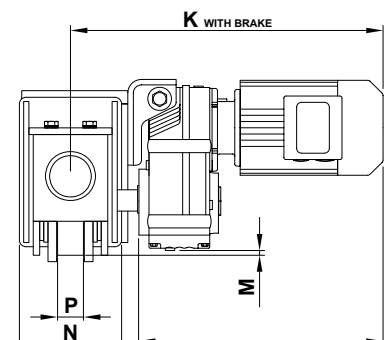
TRAVELLING SPEED (M/MIN)	MOTOR POWER (KW.)	TITAN MODEL	TOTAL MASS (KG.)	PARALLEL KEYS SHAFT TYPE	MOTOR HOLDER TYPE	RUBBER BUFFER TYPE
8/32	0.10/0.40	FA37 DT80 K8/2BMG	28	APS 01	HBG 01	RB 02

STATIC VALUES

CROSS SECTION I-I	I _x (CM ⁴)	I _y (CM ⁴)	Z _x (CM ³)	Z _y (CM ³)
	2602	1555	253	199

SCOPE OF SUPPLY

1. WHEEL OF MATERIAL SCM 4140
2. WHEEL IS FLANGE GUIDE SURFACE HARDNESS HRC 50~55
3. PARALLEL KEYS DRIVE SHAFT IS SCM 4140 HARDNESS HRC 50~55
4. BEARING HOUSING OF MATERIAL S45C
5. OUTSIDE BEARING HOUSING IS VERY EASY MAINTENANCE
6. LONG LIFT ANTI-FRICTION BEARING

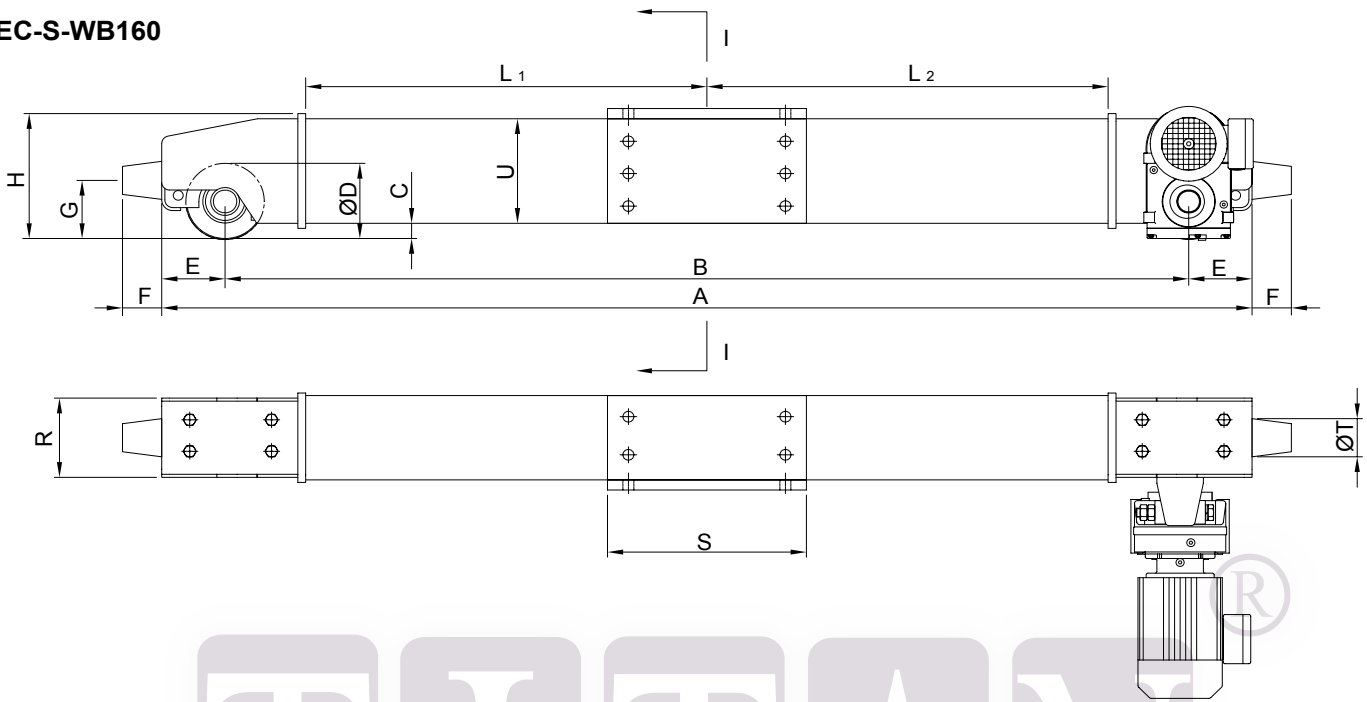


REMARK : DIMENSION ARE FOR ESTIMATE
PURPOSES AND NOT CERTIFIED DIMENSION.

UPPER END CARRIAGE

Travelling gearing girder for single girder cranes

EC-S-WB160



DIMENSION IN MM.

TYPE	WHEEL BASE B (MM.)	DIMENSION IN MM.																	
		A	C	ØD	E	F	G	H	K	L ₁	L ₂	M	N	P	R	S	ØT	U	
BC-S-WB160-2000	2000	2290	27	160	145	75	126.5	273	505	817	817	3.5	192	48/60	172	380	75	236	
BC-S-WB160-2500	2500	2790	27	160	145	75	126.5	273	505	1067	1067	3.5	192	48/60	172	380	75	206	
BC-S-WB160-3000	3000	3290	27	160	145	75	126.5	273	505	1317	1317	3.5	192	48/60	172	380	75	206	
BC-S-WB160-3500	3500	3790	27	160	145	75	126.5	273	505	1567	1567	3.5	192	48/60	172	380	75	206	

SELECTION END CARRIAGE

TYPE	WHEEL BASE B (MM)	Ø WHEEL (MM)	RAIL SQ.BAR	LOADS/WHEEL (KG.)	CRANE SPAN MAX.(M.)	WEIGHT WITHOUT MOTOR DRIVE (KG.)
BC-S-WB160-2000	2000	160	38x38/50X50	2694	12	180
BC-S-WB160-2500	2500	160	38x38/50X50	2864	15	207
BC-S-WB160-3000	3000	160	38x38/50X50	3049	18	237
BC-S-WB160-3500	3500	160	38x38/50X50	3336	21	264

SELECTION TRAVEL DRIVE

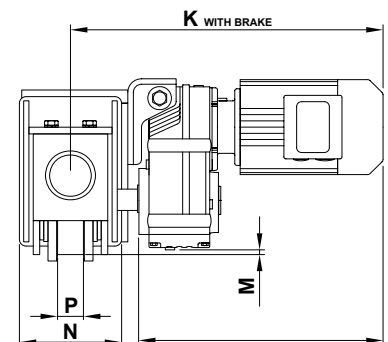
TRAVELLING SPEED (M/MIN)	MOTOR POWER (KW)	TITAN MODEL	TOTAL MASS (KG.)	PARALLEL KEYS SHAFT TYPE	MOTOR HOLDER TYPE	RUBBER BUFFER TYPE
8/32	0.15/0.60	FA47 DT80 N8/2BMG	28	APS 02	HBG 02	RB 02

STATIC VALUES

CROSS SECTION I-I	I _x (CM ⁴)	I _y (CM ⁴)	Z _x (CM ³)	Z _y (CM ³)
	5172	3033	438	352

SCOPE OF SUPPLY

1. WHEEL OF MATERIAL SCM 4140
2. WHEEL IS FLANGE GUIDE SURFACE HARDNESS HRC 50~55
3. PARALLEL KEYS DRIVE SHAFT IS SCM 4140 HARDNESS HRC 50~55
4. BEARING HOUSING OF MATERIAL S45C
5. OUTSIDE BEARING HOUSING IS VERY EASY MAINTENANCE
6. LONG LIFT ANTI-FRICTION BEARING

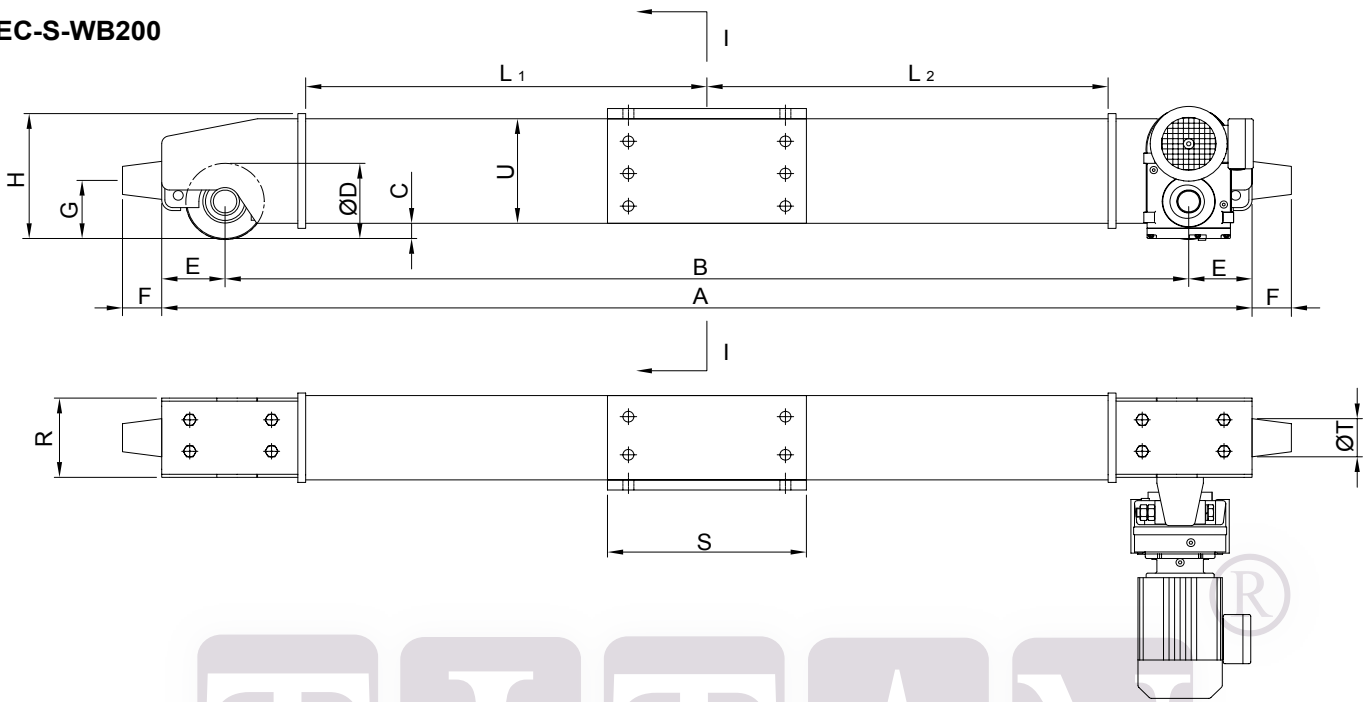


REMARK : DIMENSION ARE FOR ESTIMATE PERPOSES AND NOT CERTIFIED DIMENSION.

UPPER END CARRIAGE

Travelling gearing girder for single girder cranes

EC-S-WB200



DIMENSION IN MM.

TYPE	WHEEL BASE B (MM.)	DIMENSION IN MM.																
		A	C	ØD	E	F	G	H	K	L ₁	L ₂	M	N	P	R	S	ØT	U
BC-S-WB200-2500	2500	2845	31	200	172.5	100	150	325	549.5	1034.5	1034.5	7	222	60	202	380	75	236
BC-S-WB200-3000	3000	3345	31	200	172.5	100	150	325	549.5	1284.5	1284.5	7	222	60	202	380	75	206
BC-S-WB200-3500	3500	3845	31	200	172.5	100	150	325	549.5	1534.5	1534.5	7	222	60	202	380	75	206
BC-S-WB200-4000	4000	4345	31	200	172.5	100	150	325	549.5	1784.5	1784.5	7	222	60	202	380	75	206

SELECTION END CARRIAGE

TYPE	WHEEL BASE B (MM)	Ø WHEEL (MM)	RAIL SQ.BAR	LOADS/WHEEL (KG.)	CRANE SPAN MAX.(M)	WEIGHT WITHOUT MOTOR DRIVE (KG.)
BC-S-WB200-2500	2500	200	50X50	4115	15	303
BC-S-WB200-3000	3000	200	50X50	4433	18	346
BC-S-WB200-3500	3500	200	50X50	4630	21	386
BC-S-WB200-4000	4000	200	50X50	5050	24	429

SELECTION TRAVEL DRIVE

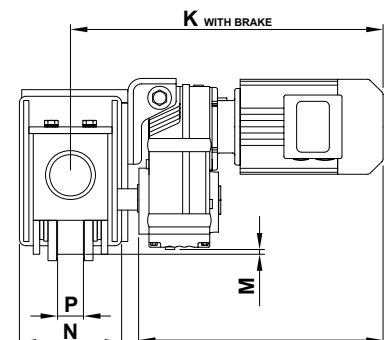
TRAVELLING SPEED (M/MIN)	MOTOR POWER (KW)	TITAN MODEL	TOTAL MASS (KG.)	PARALLEL KEYS SHAFT TYPE	MOTOR HOLDER TYPE	RUBBER BUFFER TYPE
8/32	0.22/0.90	FA57 SDT90 S8/2BMG	32	APS 03	HBG 02	RB 03

STATIC VALUES

CROSS SECTION I-I	I _x (CM ⁴)	I _y (CM ⁴)	Z _x (CM ³)	Z _y (CM ³)
	10959	6205	771	614

SCOPE OF SUPPLY

1. WHEEL OF MATERIAL SCM 4140
2. WHEEL IS FLANGE GUIDE SURFACE HARDNESS HRC 50~55
3. PARALLEL KEYS DRIVE SHAFT IS SCM 4140 HARDNESS HRC 50~55
4. BEARING HOUSING OF MATERIAL S45C
5. OUTSIDE BEARING HOUSING IS VERY EASY MAINTENANCE
6. LONG LIFT ANTI-FRICTION BEARING

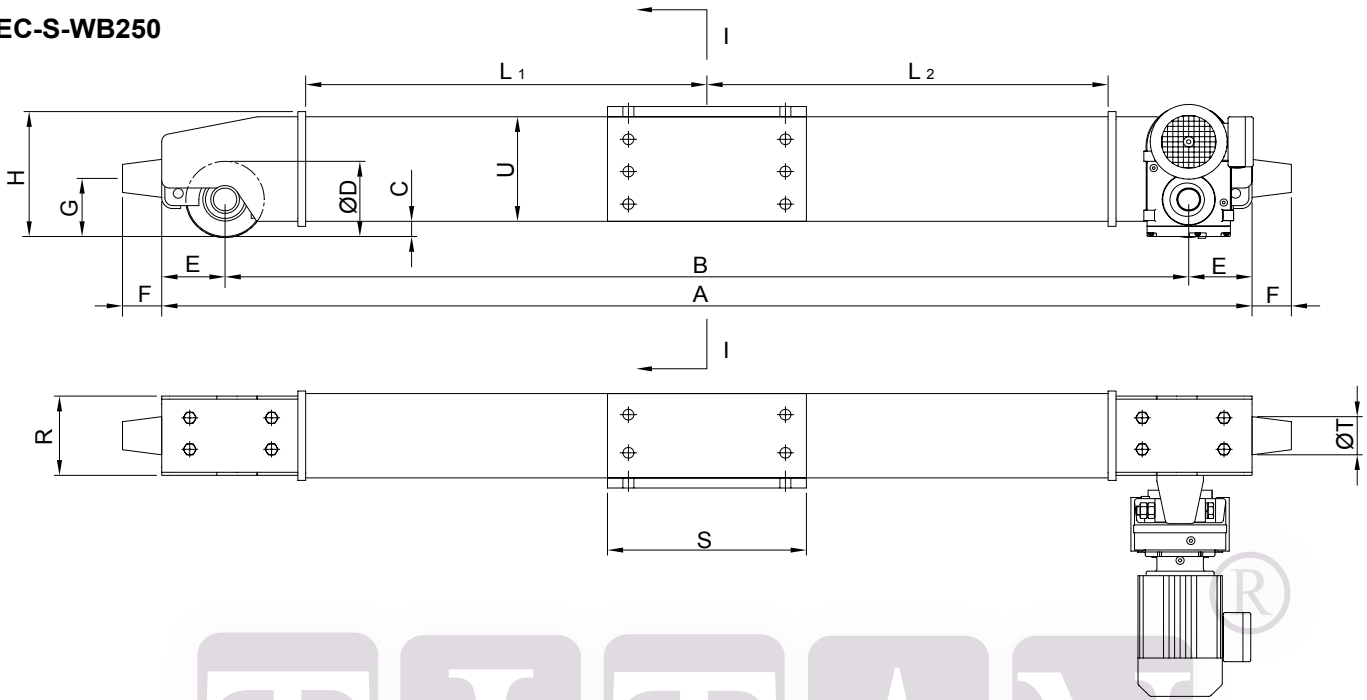


REMARK : DIMENSION ARE FOR ESTIMATE PERPOSES AND NOT CERTIFIED DIMENSION.

UPPER END CARRIAGE

Travelling gearing girder for single girder cranes

EC-S-WB250



DIMENSION IN MM.

TYPE	WHEEL BASE																	
	B (MM)	A	C	ØD	E	F	G	H	K	L ₁	L ₂	M	N	P	R	S	ØT	U
BC-S-WB250-3000	3000	3415	31	250	207.5	127	186.5	372	623	1242	1242	28.5	236	60	216	380	127	332
BC-S-WB250-3500	3500	3915	31	250	207.5	127	186.5	372	623	1302	1302	28.5	236	60	216	380	127	332
BC-S-WB250-4000	4000	4415	31	250	207.5	127	186.5	372	623	1742	1742	28.5	236	60	216	380	127	332
BC-S-WB250-4500	4500	4915	31	250	207.5	127	186.5	372	623	1967	1967	28.5	236	60	216	380	127	332

SELECTION END CARRIAGE

TYPE	WHEEL BASE B (MM)	Ø WHEEL (MM)	RAIL SQ.BAR	LOADS/WHEEL (KG.)	CRANE SPAN MAX.(M)	WEIGHT WITHOUT MOTOR DRIVE (KG.)
BC-S-WB250-3000	3000	250	50X50	8175	18	471
BC-S-WB250-3500	3500	250	50X50	8431	21	484
BC-S-WB250-4000	4000	250	50X50	8684	24	584
BC-S-WB250-4500	4500	250	50X50	8914	27	638

SELECTION TRAVEL DRIVE

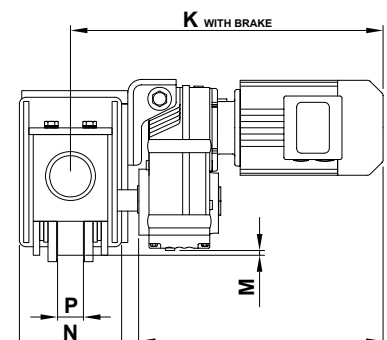
TRAVELLING SPEED (M/MIN)	MOTOR POWER (KW)	TITAN MODEL	TOTAL MASS (KG.)	PARALLEL KEYS SHAFT TYPE	MOTOR HOLDER TYPE	RUBBER BUFFER TYPE
8/32	0.30/1.30	FA67 SDT90 L8/2BMG	56	APS 04	HBG 02	RB 03

STATIC VALUES

CROSS SECTION I-I	Ix (CM ⁴)	Iy (CM ⁴)	Zx (CM ³)	Zy (CM ³)
	19851	9808	1195	908

SCOPE OF SUPPLY

1. WHEEL OF MATERIAL SCM 4140
2. WHEEL IS FLANGE GUIDE SURFACE HARDNESS HRC 50~55
3. PARALLEL KEYS DRIVE SHAFT IS SCM 4140 HARDNESS HRC 50~55
4. BEARING HOUSING OF MATERIAL S45C
5. OUTSIDE BEARING HOUSING IS YERY EAZY MAINTENANCE
6. LONG LIFT ANTI-FRICTION BEARING

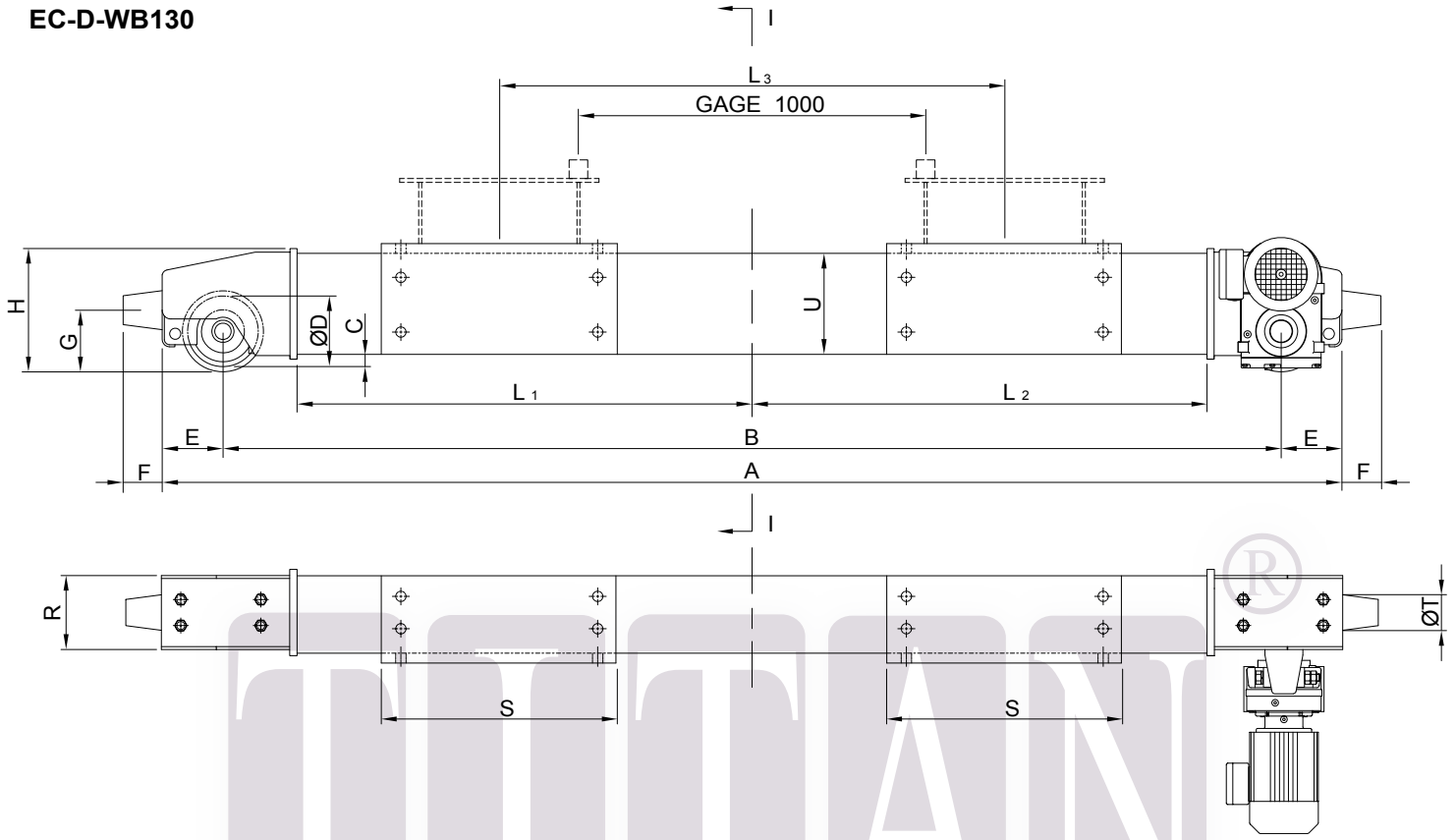


REMARK : DIMENSION ARE FOR ESTIMATE
PERPOSES AND NOT CERTIFIED DIMENSION.

UPPER END CARRIAGE

Travelling gearing girder for double girder cranes

EC-D-WB130



DIMENSION IN MM.

TYPE	WHEEL BASE B (MM)	DIMENSION IN MM.																	
		A	C	ØD	E	F	G	H	K	L ₁	L ₂	L ₃	M	N	P	R	S	ØT	U
EC-D-WB130-2500	2500	2427	22	130	121	75	106.5	238	474.5	1096	1096	1086	10.5	176	48	156	380	50	206

SELECTION END CARRIAGE

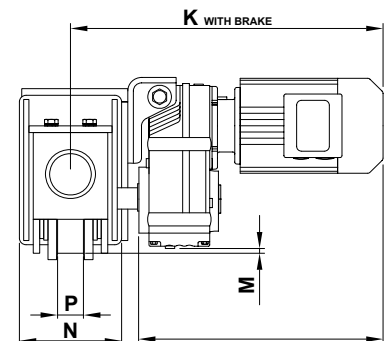
TYPE	WHEEL BASE B (MM)	Ø WHEEL (MM)	RAIL SQ.BAR	LOAD/WHEEL (KG)	CRANE SPAN MAX.(M)	WEIGHT WITHOUT MOTOR DRIVE (KG)
EC-D-WB130-2500	2500	130	38x38	2302	15	169

STATIC VALUES

CROSS SECTION I-I	I _x (CM ⁴)	I _y (CM ⁴)	Z _x (CM ³)	Z _y (CM ³)
	2602	1555	253	199

SCOPE OF SUPPLY

1. WHEEL OF MATERIAL SCM 4140
2. WHEEL IS FLANGE GUIDE SURFACE HARDNESS HRC 50~55
3. PARALLEL KEYS DRIVE SHAFT IS SCM 4140 HARDNESS HRC 50~55
4. BEARING HOUSING OF MATERIAL S45C
5. OUTSIDE BEARING HOUSING IS YERY EAZY MAINTENANCE
6. LONG LIFT ANTI-FRICTION BEARING

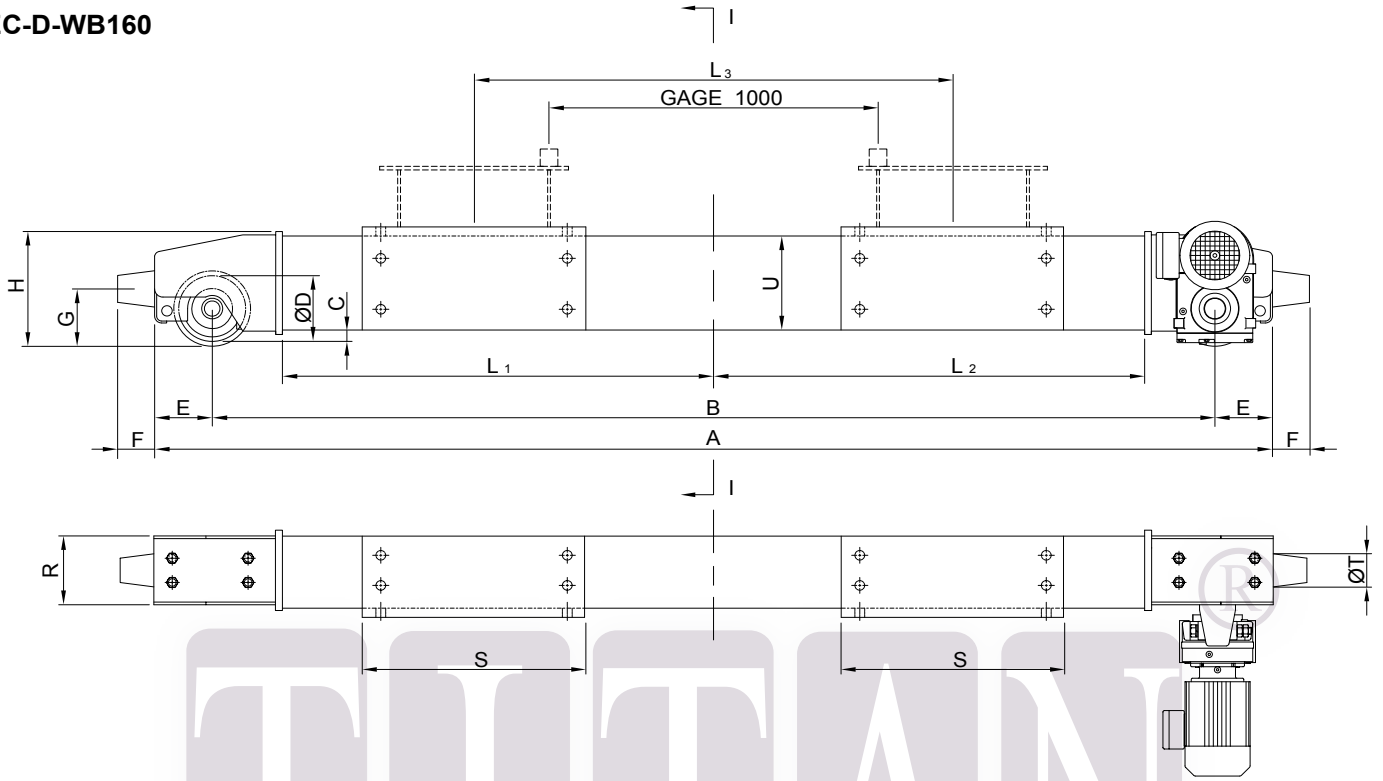


REMARK : DIMENSION ARE FOR ESTIMATE PERPOSES AND NOT CERTIFIED DIMENSION.

UPPER END CARRIAGE

Travelling gearing girder for double girder cranes

EC-D-WB160



DIMENSION IN MM.

TYPE	WHEEL BASE B (MM)	DIMENSION IN MM.																	
		A	C	ØD	E	F	G	H	K	L ₁	L ₂	L ₃	M	N	P	R	S	ØT	U
EC-D-WB160-2500	2500	2790	27	160	145	75	126.5	273	505	1067	1067	1086	3.5	192	48/60	172	380	75	236
EC-D-WB160-3000	3000	3290	27	160	145	75	126.5	273	505	1317	1317	1086	3.5	192	48/60	172	380	75	236
EC-D-WB160-3500	3500	3790	27	160	145	75	126.5	273	505	1567	1567	1086	3.5	192	48/60	172	380	75	236

SELECTION END CARRIAGE

TYPE	WHEEL BASE B(MM)	Ø WHEEL (MM)	RAIL SQ.BAR	LOAD/WHEEL (KG)	CRANE SPAN MAX.(M)	WEIGHT WITHOUT MOTOR DRIVE (KG)
EC-D-WB160-2500	2500	160	38x38/50X50	3039	15	215
EC-D-WB160-3000	3000	160	38x38/50X50	3288	18	240
EC-D-WB160-3500	3500	160	38x38/50X50	3621	21	262

SELECTION TRAVEL DRIVE

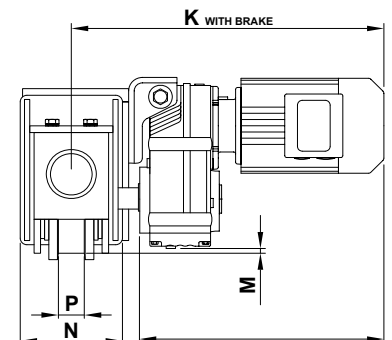
TRAVELLING SPEED (M/MIN)	MOTOR POWER (KW)	TITAN MODEL	TOTAL MASS (KG.)	PARALLEL KEYS SHAFT TYPE	MOTOR HOLDER TYPE	RUBBER BUFFER TYPE
8/32	0.15/0.60	FA47 DT80 N8/2BMG	28	APS 02	HBG 01	RB 02

STATIC VALUES

CROSS SECTION I-I	I _x (CM ⁴)	I _y (CM ⁴)	Z _x (CM ³)	Z _y (CM ³)
		5175	3033	438

SCOPE OF SUPPLY

1. WHEEL OF MATERIAL SCM 4140
2. WHEEL IS FLANGE GUIDE SURFACE HARDNESS HRC 50~55
3. PARALLEL KEYS DRIVE SHAFT IS SCM 4140 HARDNESS HRC 50~55
4. BEARING HOUSING OF MATERIAL S45C
5. OUTSIDE BEARING HOUSING IS YERY EAZY MAINTENANCE
6. LONG LIFT ANTI-FRICTION BEARING

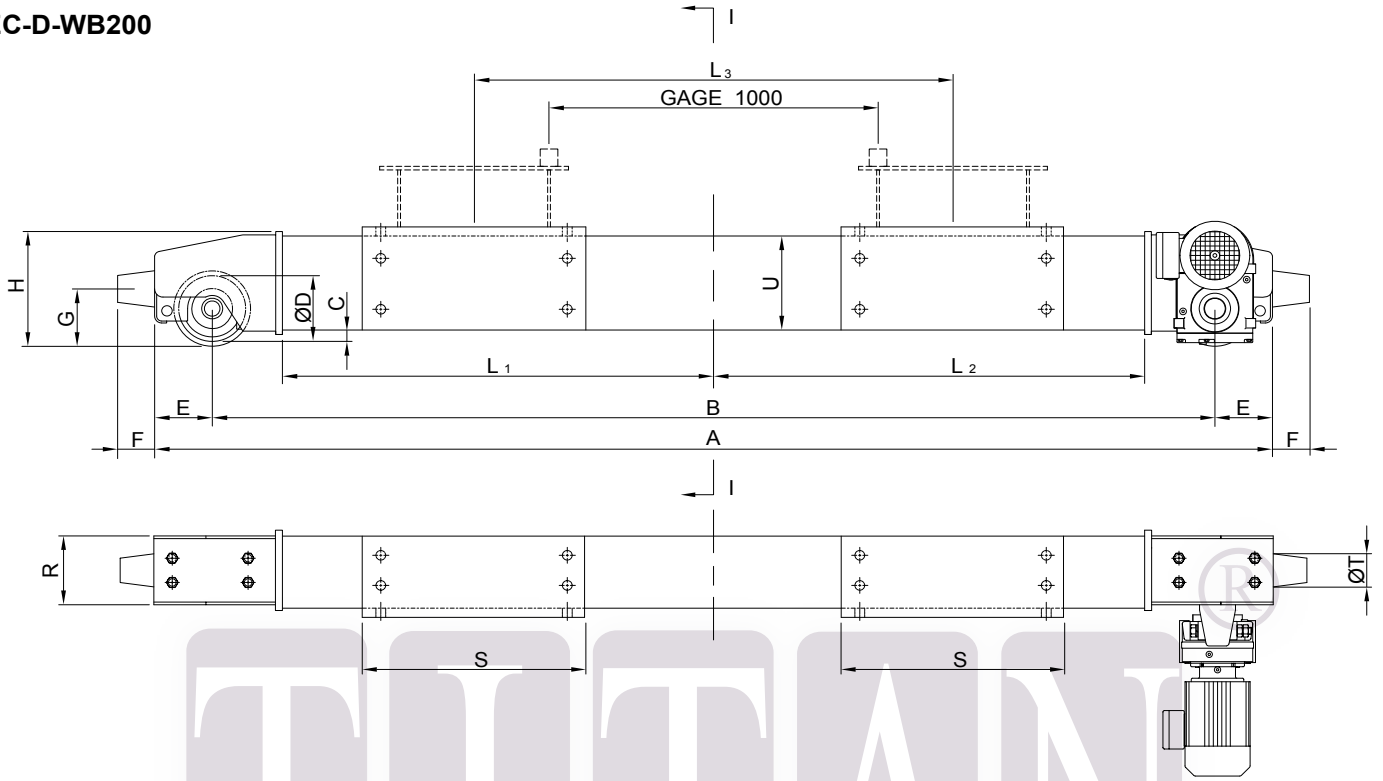


REMARK : DIMENSION ARE FOR ESTIMATE PERPOSES AND NOT CERTIFIED DIMENSION.

UPPER END CARRIAGE

Travelling gearing girder for double girder cranes

EC-D-WB200



DIMENSION IN MM.

TYPE	WHEEL BASE B (MM)	DIMENSION IN MM.																	
		A	C	ØD	E	F	G	H	K	L ₁	L ₂	L ₃	M	N	P	R	S	ØT	U
EC-D-WB200-3000	3000	3345	31	200	172.5	100	150	325	549.5	1284.5	1284.5	1086	7	222	60	202	380	100	284
EC-D-WB200-3500	3500	3845	31	200	172.5	100	150	325	549.5	1534.5	1534.5	1086	7	222	60	202	380	100	284
EC-D-WB200-4000	4000	4345	31	200	172.5	100	150	325	549.5	1784.5	1784.5	1086	7	222	60	202	380	100	284

SELECTION END CARRIAGE

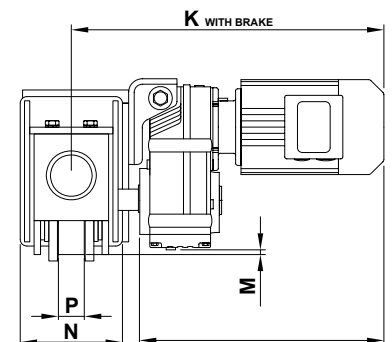
TYPE	WHEEL BASE B(MM)	Ø WHEEL (MM)	RAIL SQ.BAR	LOAD/WHEEL (KG)	CRANE SPAN MAX.(M)	WEIGHT WITHOUT MOTOR DRIVE (KG)
EC-D-WB200-3000	3000	200	50X50	4674	18	378
EC-D-WB200-3500	3500	200	50X50	5271	21	414
EC-D-WB200-4000	4000	200	50X50	5641	24	461

SELECTION TRAVEL DRIVE

TRAVELLING SPEED (M/MIN)	MOTOR POWER (KW)	TITAN MODEL	TOTAL MASS (KG.)	PARALLEL KEYS SHAFT TYPE	MOTOR HOLDER TYPE	RUBBER BUFFER TYPE
8/32	0.22/0.90	FA57 SDT90 S8/2BMG	32	APS 03	HBG 02	RB 03

STATIC VALUES

CROSS SECTION I-I	I _x (CM ⁴)	I _y (CM ⁴)	Z _x (CM ³)	Z _y (CM ³)
	5175	3033	438	352



SCOPE OF SUPPLY

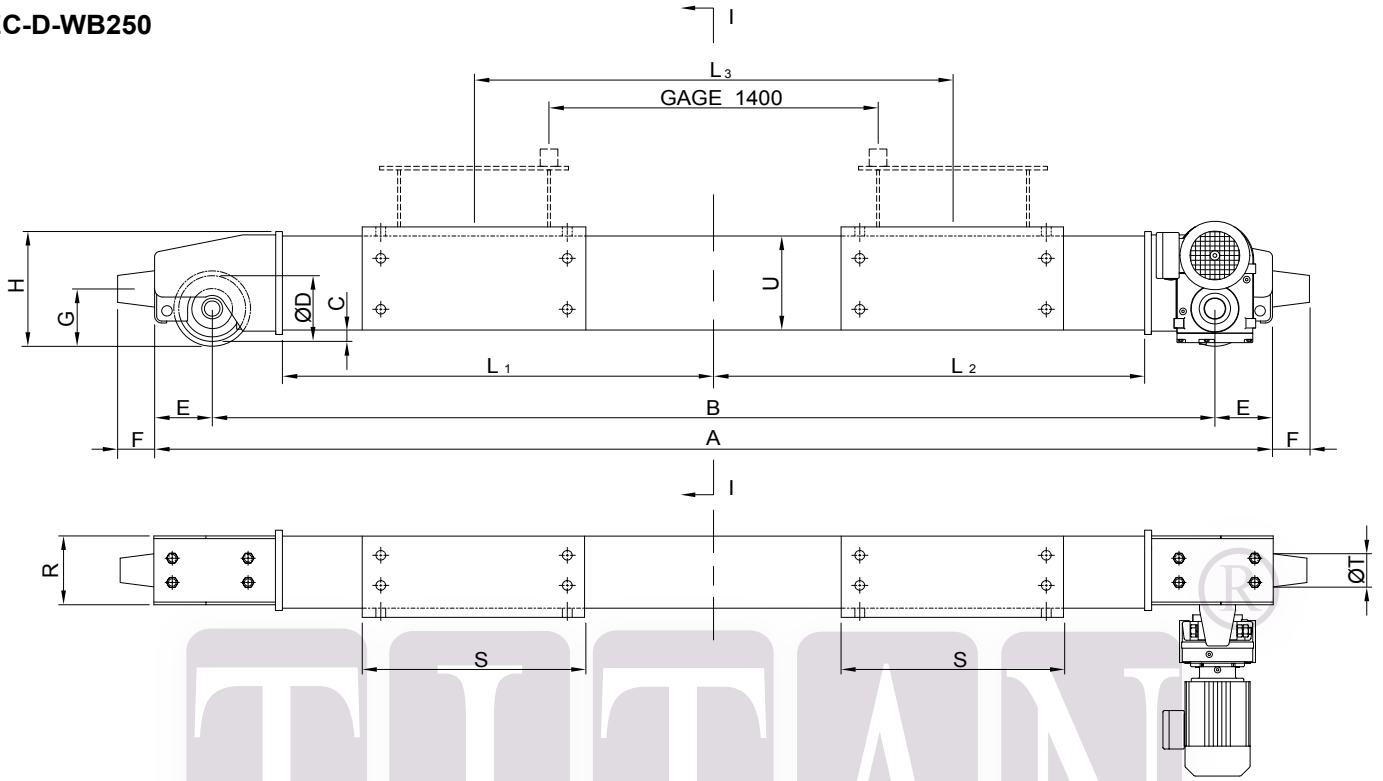
1. WHEEL OF MATERIAL SCM 4140
2. WHEEL IS FLANGE GUIDE SURFACE HARDNESS HRC 50~55
3. PARALLEL KEYS DRIVE SHAFT IS SCM 4140 HARDNESS HRC 50~55
4. BEARING HOUSING OF MATERIAL S45C
5. OUTSIDE BEARING HOUSING IS VERY EAZY MAINTENANCE
6. LONG LIFT ANTI-FRICTION BEARING

REMARK : DIMENSION ARE FOR ESTIMATE PERPOSES AND NOT CERTIFIED DIMENSION.

UPPER END CARRIAGE

Travelling gearing girder for double girder cranes

EC-D-WB250



DIMENSION IN MM.

TYPE	WHEEL BASE B (MM)	DIMENSION IN MM.																	
		A	C	ØD	E	F	G	H	K	L ₁	L ₂	L ₃	M	N	P	R	S	ØT	U
EC-D-WB250-3500	3500	3915	31	250	207.5	127	186.5	372	623	1302	1302	1806	28.5	236	60	216	600	127	332
EC-D-WB250-4000	4000	4415	31	250	207.5	127	186.5	372	623	1742	1742	1806	28.5	236	60	216	600	127	332
EC-D-WB250-4500	4500	4915	31	250	207.5	127	186.5	372	623	1967	1967	1806	28.5	236	60	216	600	127	332

SELECTION END CARRIAGE

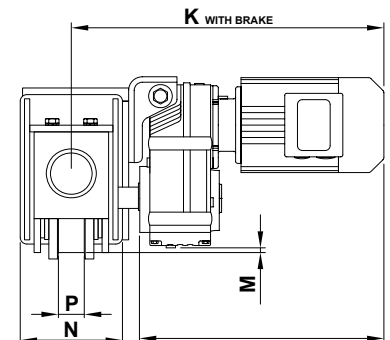
TYPE	WHEEL BASE B(MM)	Ø WHEEL (MM)	RAIL SQ.BAR	LOAD/WHEEL (KG)	CRANE SPAN MAX.(M)	WEIGHT WITHOUT MOTOR DRIVE (KG)
EC-D-WB250-3500	3500	250	50X50	11307	21	555
EC-D-WB250-4000	4000	250	50X50	11637	21	609
EC-D-WB250-4500	4500	250	50X50	12330	21	668

SELECTION TRAVEL DRIVE

TRAVELLING SPEED (M/MIN)	MOTOR POWER (KW)	TITAN MODEL	TOTAL MASS (KG.)	PARALLEL KEYS SHAFT TYPE	MOTOR HOLDER TYPE	RUBBER BUFFER TYPE
8/32	0.30/1.30	FA67 SDT90 L8/2BMG	56	APS 04	HBG 02	RB 03

STATIC VALUES

CROSS SECTION I-I	Ix (CM ⁴)	Iy (CM ⁴)	Zx (CM ³)	Zy (CM ³)
		19851	9808	1195



SCOPE OF SUPPLY

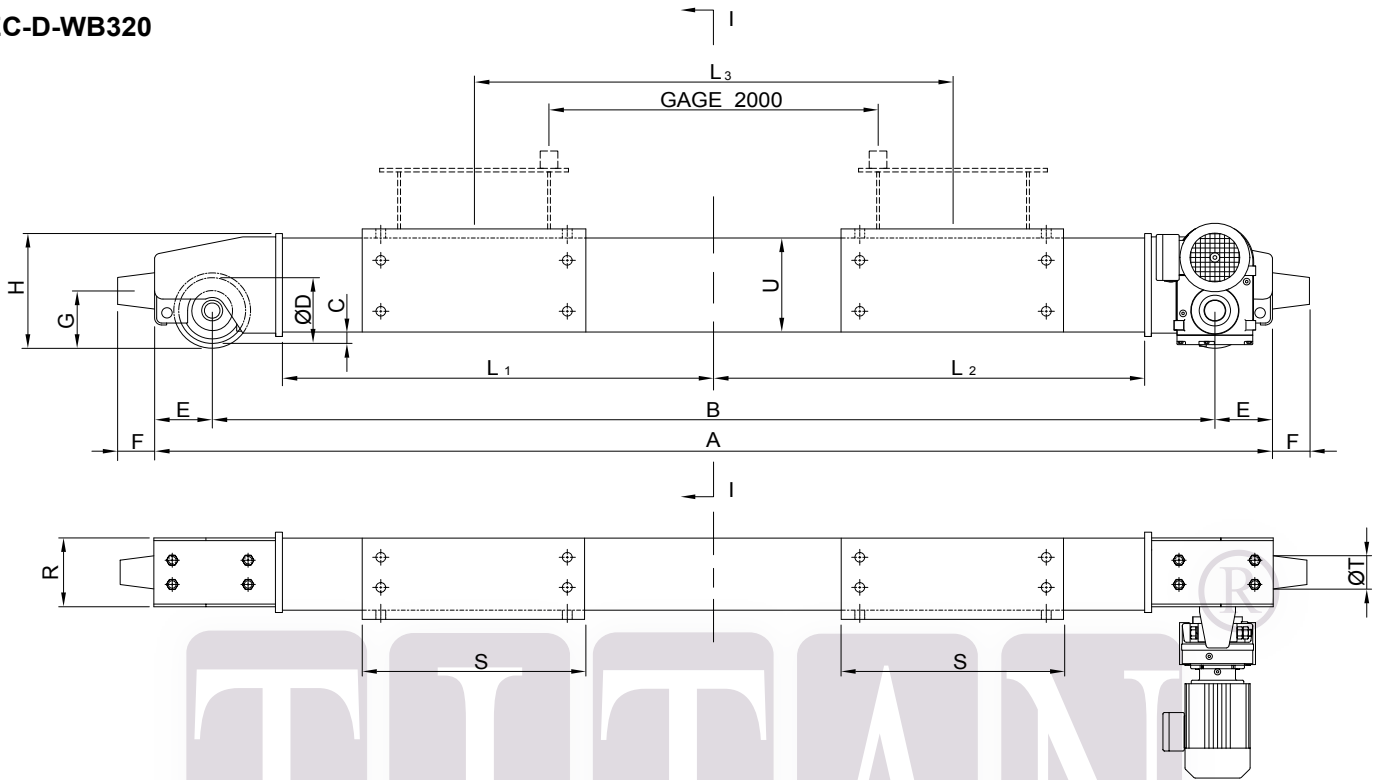
1. WHEEL OF MATERIAL SCM 4140
2. WHEEL IS FLANGE GUIDE SURFACE HARDNESS HRC 50~55
3. PARALLEL KEYS DRIVE SHAFT IS SCM 4140 HARDNESS HRC 50~55
4. BEARING HOUSING OF MATERIAL S45C
5. OUTSIDE BEARING HOUSING IS VERY EAZY MAINTENANCE
6. LONG LIFT ANTI-FRICTION BEARING

REMARK : DIMENSION ARE FOR ESTIMATE PERPOSES AND NOT CERTIFIED DIMENSION.

UPPER END CARRIAGE

Travelling gearing girder for double girder cranes

EC-D-WB320



DIMENSION IN MM.

TYPE	WHEEL BASE B (MM)	DIMENSION IN MM.																	
		A	C	ØD	E	F	G	H	K	L ₁	L ₂	L ₃	M	N	P	R	S	ØT	U
EC-D-WB320-4000	4000	4510	53	320	255	127	235.5	465	698.5	3380	3380	2806	40	280	75	260	600	127	402
EC-D-WB320-4500	4500	5010	53	320	255	127	235.5	465	698.5	3880	3880	2806	40	280	75	260	600	127	402
EC-D-WB320-5000	5000	5510	53	320	255	127	235.5	465	698.5	4380	4380	2806	40	280	75	260	600	127	402

SELECTION END CARRIAGE

TYPE	WHEEL BASE B(MM)	Ø WHEEL (MM)	RAIL SQ.BAR	LOAD/WHEEL (KG)	CRANE SPAN MAX.(M)	WEIGHT WITHOUT MOTOR DRIVE (KG)
EC-D-WB320-4000	4000	320	65X65	20910	24	928
EC-D-WB320-4500	4500	320	65X65	21575	27	1009
EC-D-WB320-5000	5000	320	65X65	23046	30	1082

SELECTION TRAVEL DRIVE

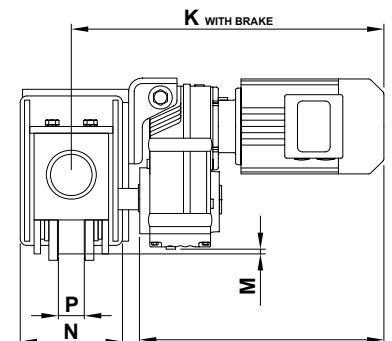
TRAVELLING SPEED (M/MIN)	MOTOR POWER (KW)	TITAN MODEL	TOTAL MASS (KG.)	PARALLEL KEYS SHAFT TYPE	MOTOR HOLDER TYPE	RUBBER BUFFER TYPE
8/32	0.45/1.80	FA77 SDT100 LS8/2BMG	68	APS 05	HBG 03	RB 04

STATIC VALUES

CROSS SECTION I-I	I _x (CM ⁴)	I _y (CM ⁴)	Z _x (CM ³)	Z _y (CM ³)
		38130	19562	1867

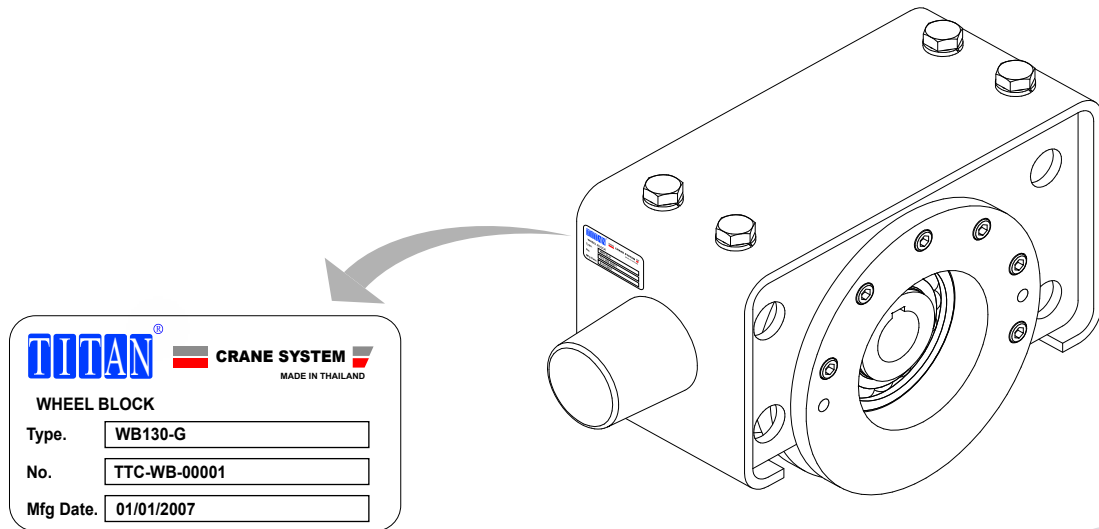
SCOPE OF SUPPLY

1. WHEEL OF MATERIAL SCM 4140
2. WHEEL IS FLANGE GUIDE SURFACE HARDNESS HRC 50~55
3. PARALLEL KEYS DRIVE SHAFT IS SCM 4140 HARDNESS HRC 50~55
4. BEARING HOUSING OF MATERIAL S45C
5. OUTSIDE BEARING HOUSING IS YERY EAZY MAINTENANCE
6. LONG LIFT ANTI-FRICTION BEARING



REMARK : DIMENSION ARE FOR ESTIMATE
PERPOSES AND NOT CERTIFIED DIMENSION.

WHEEL BLOCK NAMEPLATE & MODEL CODE



HOW TO READ (EXAMPLE)

* WHEEL BLOCK

Type **WB130-G** ; WHEEL BLOCK GUIDE MOUNT ON MOTOR FOR GEAR UNIT
WB130-P ; WHEEL BLOCK PURSUE

No. **TTC - WB - 0001**
 ————— WHEEL BLOCK NUMBER
 ————— WHEEL BLOCK
 ————— TITAN CRANE COMPANY LIMITED

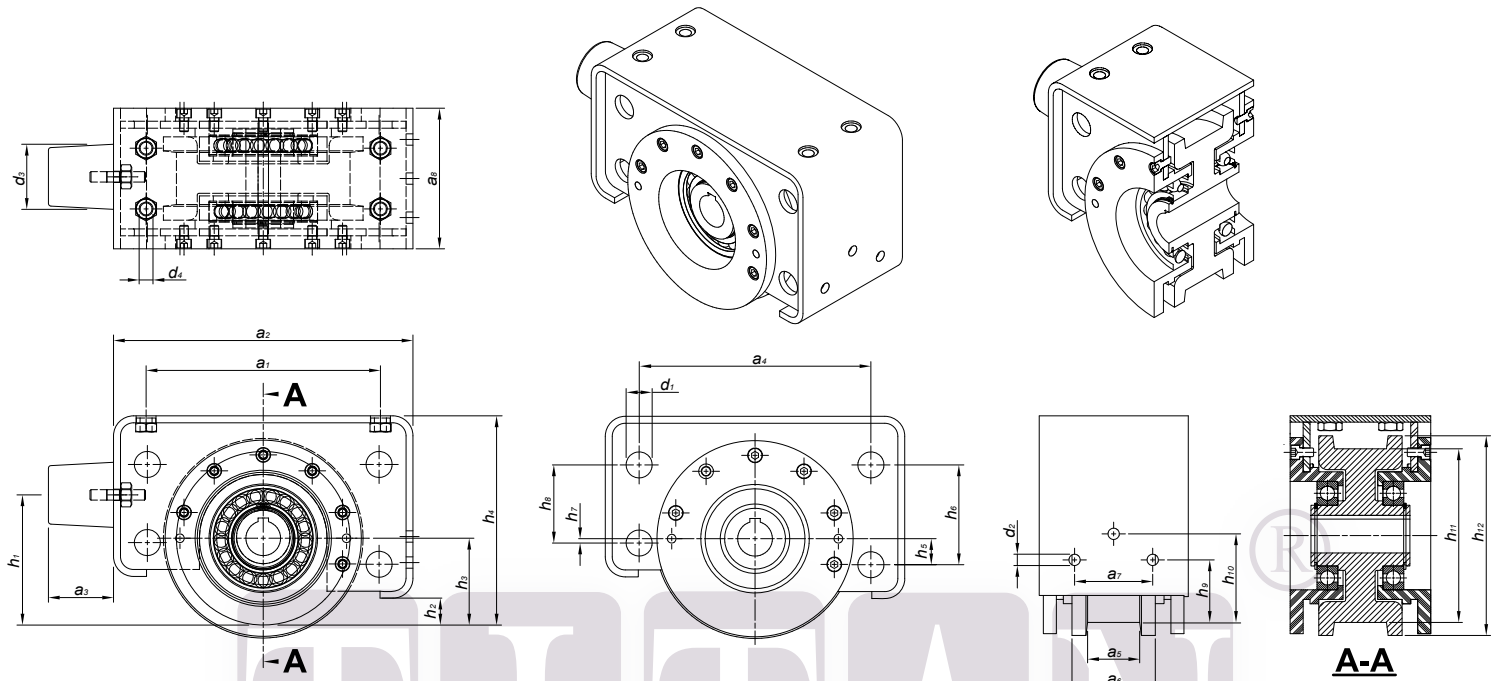
Mfg Date **01/01/2007**
 ————— YEAR
 ————— MONTH
 ————— DATE

NAMEPLATE

Each WB series wheel block unit distributed from Titan Crane Company's works is fitted with nameplate which identify the characteristics of that particular model of wheel block.

When ordering spare parts for the WB series unit please supply type a details from nameplate.

WHEEL BLOCK DIMENSION - WB110, WB130, WB160, WB200, WB250



WHEEL BLOCK DIMENSION - WB110, WB130, WB160, WB200, WB250

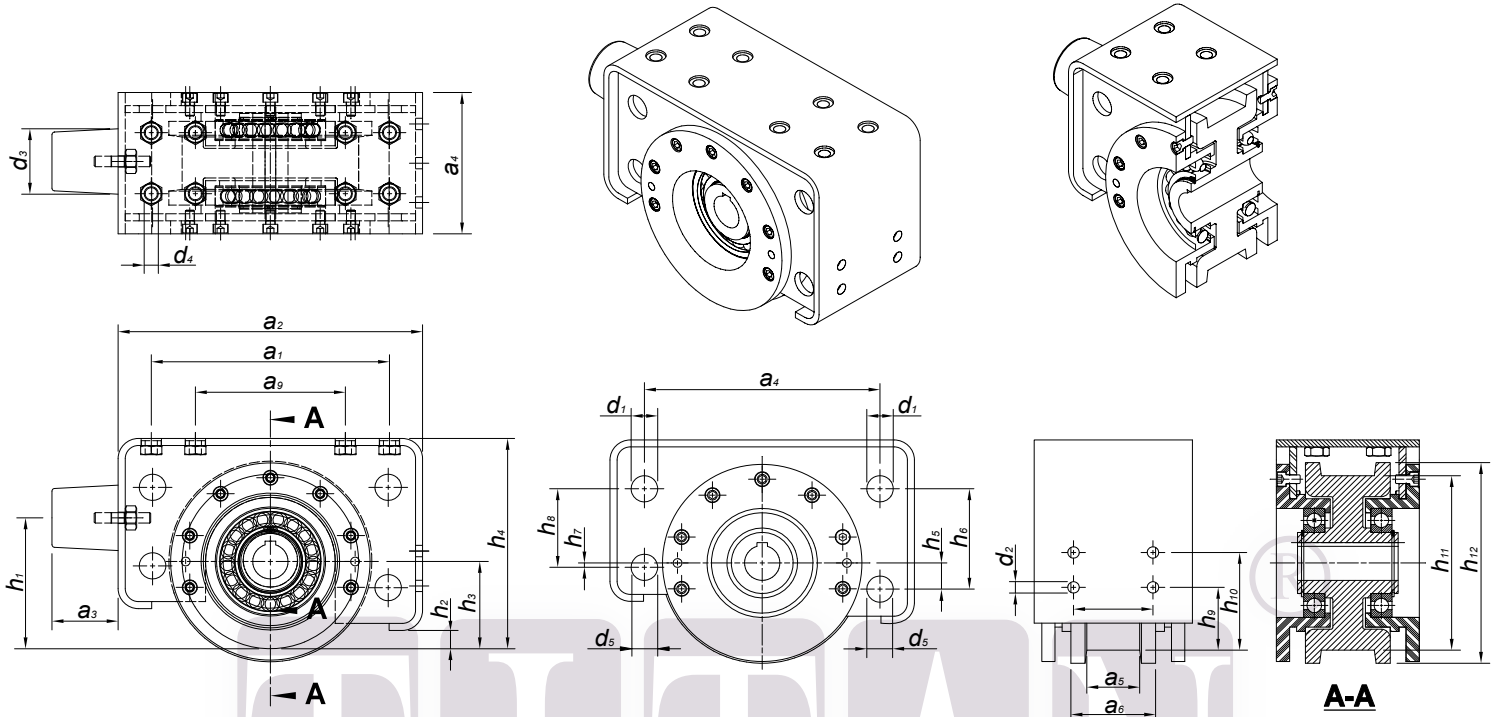
WHEEL BLOCK Ø (MM)	TYPE	MAX. WHEEL LOADS (KG.)	SHAFT TYPE	DRIVE MOTOR TYPE
110	WB110-G WB110-P	-	APS-01	FA27 DT80 K8/2BMG, 0.05/0.20 KW.
130	WB130-G WB130-P	3000	APS-01	FA37 DT80 K8/2BMG, 0.10/0.40 KW.
160	WB160-G WB160-P	7000	APS-02	FA47 DT80 N8/2BMG, 0.15/0.60 KW.
200	WB200-G WB200-P	10000	APS-03	FA57 SDT90 K8/2BMG, 0.22/0.90 KW.
250	WB250-G WB250-P	16000	APS-04	FA67 SDT90 L8/2BMG, 0.30/1.30 KW.

WHEEL BLOCK Ø (MM.)	DIMENSION (MM.)														
	a_1	a_2	a_3	a_4	a_5	a_6	a_7	a_8	d_1	d_2	d_3	d_4	h_1	h_2	h_3
110	130	200	40	152	48	72	60	110	17	17 (M12)	40	M16	103.5	25	57.5
130	170	242	75	179	48	78	60	124	19	17 (M12)	75	M16	106.5	22	65
160	220	290	75	223	48/60	90	60	136	23	17 (M12)	75	M16	126.5	27	80
200	220	345	100	267	48/60	96	80	162	30	16 (M23)	100	M16	150	31	100
250	290	415	100	321	60/75	104	80	172	35	16 (M23)	100	M16	186.5	31	125

WHEEL BLOCK Ø (MM.)	DIMENSION (MM.)									
	h_4	h_5	h_6	h_7	h_8	h_9	h_{10}	h_{11}	h_{12}	
110	140	7.49	60	12.5	40	56	96	115	135	
130	166	13	75	12	50	70	100	130	150	
160	201	19.5	91.5	5.5	66.5	70	100	160	190	
200	241	30	115	5	90	70	100	200	230	
250	293	77	148	-	98	70	100	250	280	

G = Guide
P = Pursue
APS = Axial Parallel Keys Shaft

WHEEL BLOCK DIMENSION - WB320, WB400, WB500



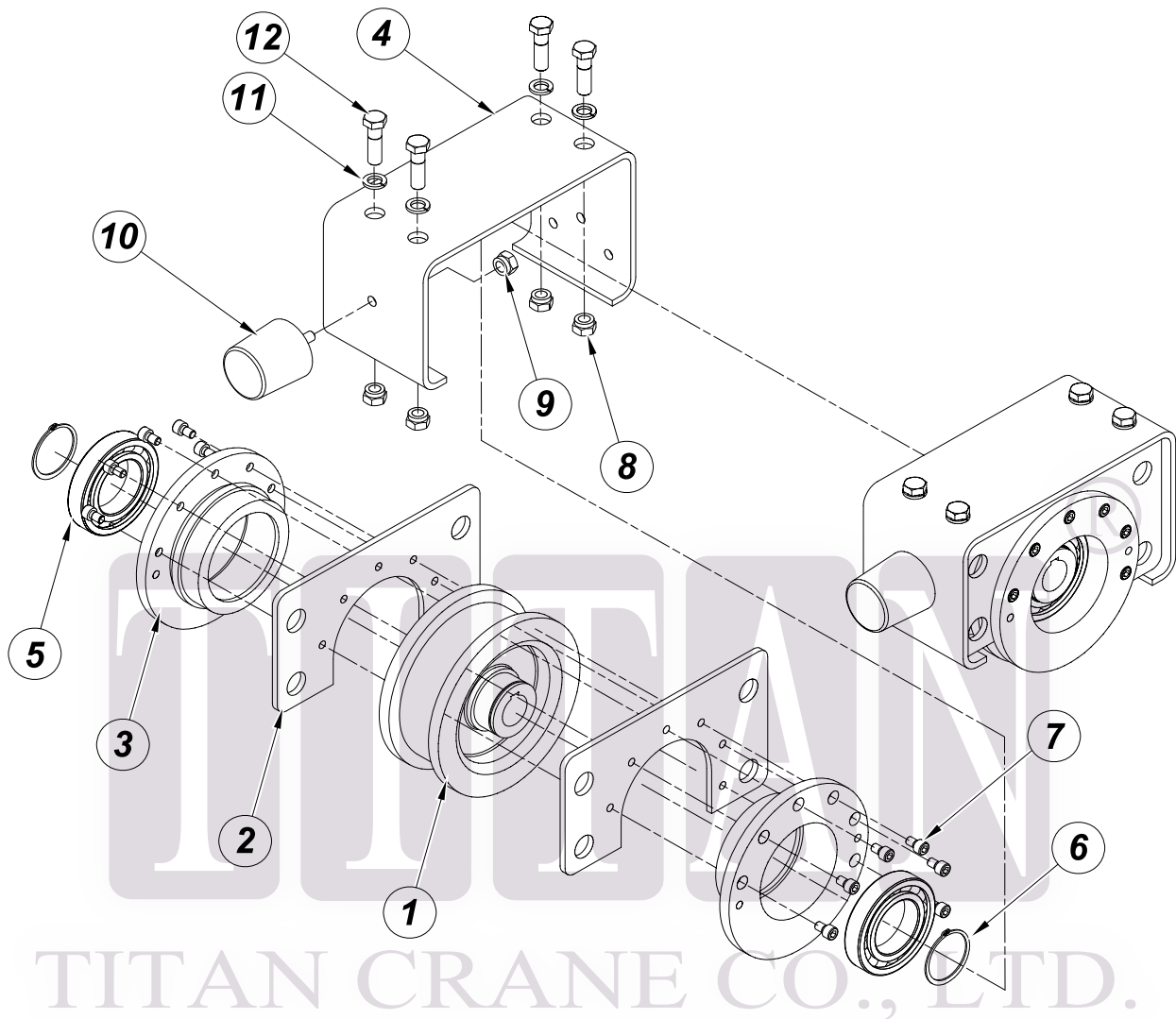
WHEEL BLOCK DIMENSION - WB320, WB400, WB500

WHEEL BLOCK Ø (MM)	TYPE	MAX. WHEEL LOADS (KG.)	SHAFT TYPE	DRIVE MOTOR TYPE
320	WB320-G WB320-P	25000	APS-05	FA77 SDT100 LS8/2BMG, 0.45/1.80 KW.
WHEEL BLOCK SPECIAL SIZE				
400	WB400-G WB400-P	30000	APS-06	FA87 SDT100 L8/2BMG, 0.60/2.40 KW.
500	WB130-G WB130-P	40000	APS-07	FA97 SDV112 M8/2BMG, 0.80/3.00 KW.

WHEEL BLOCK Ø (MM)	DIMENSION (MM.)														
	a_1	a_2	a_3	a_4	a_5	a_6	a_7	a_8	a_9	d_1	d_2	d_3	d_4	d_5	h_1
320	400	510	125	406	60/75	129	100	210	300	40	23 (M16)	125	M16	40	235.5
400	400	660	150	516	75/90	146	100	236	300	35	28 (M20)	150	M20	50	283
500	400	804	150	640	78/90	156	100	252	340	40	32 (M22)	150	M22	60	350
WHEEL BLOCK Ø (MM)	DIMENSION (MM.)														
	h_2	h_3	h_4	h_5	h_6	h_7	h_8	h_9	h_{10}	h_{11}	h_{12}				
320	53	160	368	53	168.5	3	118.5	90	120	320	360				
400	38	200	453	75	225	-	150	90	120	400	450				
500	38	250	562	100	271	-	171	90	120	500	560				

G = Guide
P = Pursue
APS = Axial Parallel Keys Shaft

WHEEL BLOCK UNIT - WB110, WB130, WB160, WB200, WB250

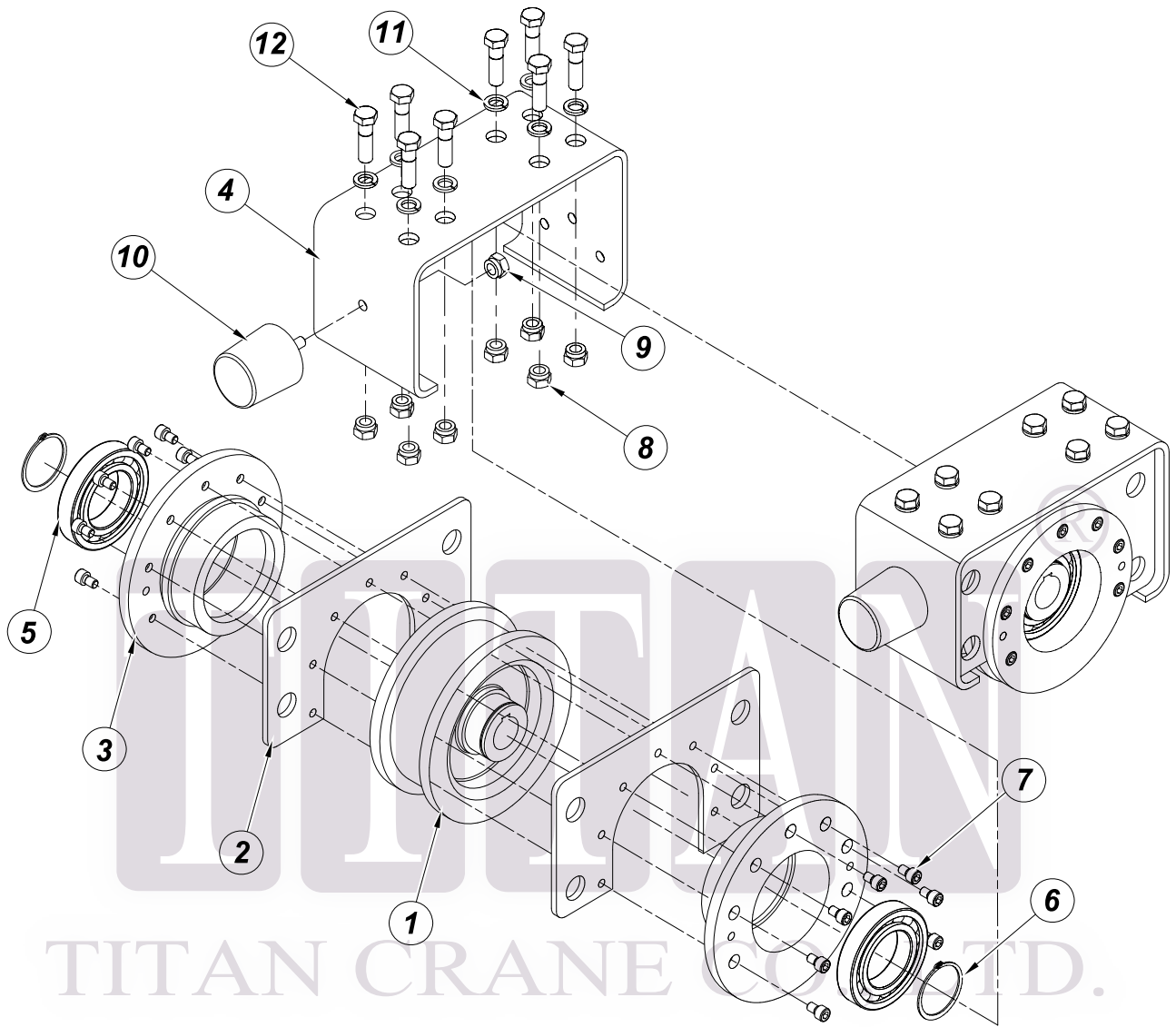


TITAN CRANE CO., LTD.

MATERIAL LIST

ITEM	DESCRIPTION	Q'TY	REMARK
1.	WHEEL	1	SCM4140
2.	INNER PLATE	2	SS400
3.	BEARING CASE	2	SCM4140
4.	U-FOLDER	1	SS400
5.	BALL BEARING	2	STD.
6.	CIRCLIP EXTERNAL RING	2	STD.
7.	HEX SOCKET HEAD SCREW	12	M8.8
8.	SPLINE NUT	4	STD.
9.	SPLINE NUT	1	STD.
10.	RUBBER BUFFER	1	-
11.	SPRING WASHER	4	STD.
12.	SPLINE NUT	4	M8.8

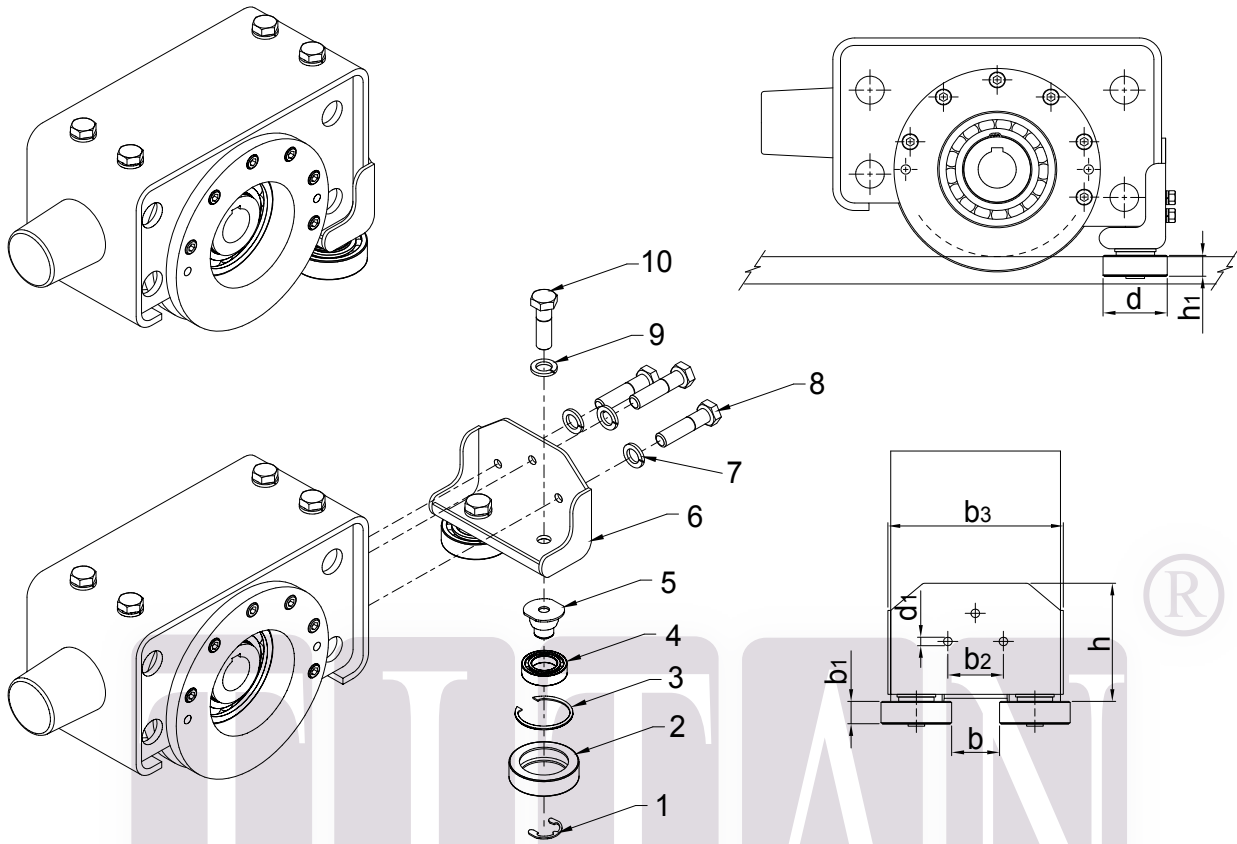
WHEEL BLOCK UNIT - WB320, WB400, WB500



MATERIAL LIST

ITEM	DESCRIPTION	Q'TY	REMARK
1.	WHEEL	1	SCM4140
2.	INNER PLATE	2	SS400
3.	BEARING CASE	2	SCM4140
4.	U-FOLDER	1	SS400
5.	BALL BEARING	2	STD.
6.	CIRCLIP EXTERNAL RING	2	STD.
7.	HEX SOCKET HEAD SCREW	14	M8.8
8.	SPLINE NUT	8	STD.
9.	SPLINE NUT	1	STD.
10.	RUBBER BUFFER	1	-
11.	SPRING WASHER	8	STD.
12.	SPLINE NUT	8	M8.8

WHEEL BLOCK WITH GUIDE ROLLER UNIT - EB130, WB160, WB200, WB250



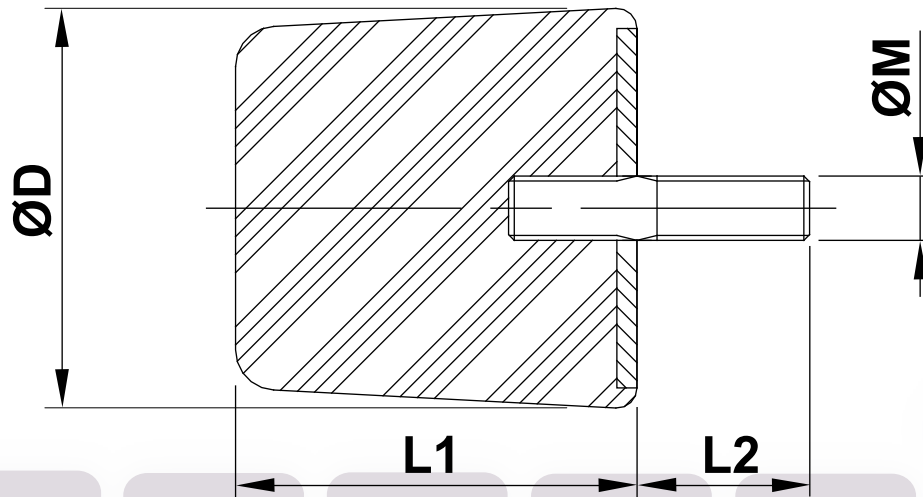
DIMENSION IN MM.

TYPE	b		b ₁	b ₂	b ₃	d	d ₁	h	h ₁
	MIN.	MAX.							
WB130	42	48	25	60	140	60	13	137	28
WB160	42	48/60	25	60	152	60	13	137	28
WB200	54	60	35	80	182	75	17	137	38
WB250	54	60	35	80	192	75	17	137	38

MATERIAL LIST

ITEM	DESCRIPTION	Q'TY	REMARK
1.	BOWED E-RING	2	STD.
2.	GUIDE ROLLER	2	SCM4140
3.	CIRCLIP INTERNAL RING	2	STD.
4.	BALL BEARING	2	STD.
5.	SPINDLE	2	S45C
6.	HOUSING	1	SS400
7.	SPRING WASHER	3	STD.
8.	CONNECTING BOLT	3	STD.
9.	SPRING WASHER	2	STD.
10.	CONNECTING BOLT	2	STD.
11.	SPLINE NUT	3	STD.

RUBBER BUFFER



TYPE	DIMENSION IN MM.			
	ØD	L1	L2	ØM
RB 01	40	40	20	M 8
RB 02	75	75	35	M 16
RB 03	100	100	35	M 16
RB 04	125	125	40	M 16
RB 05	150	150	50	M 20



บริษัท ไทเทิน เซอร์วิส จำกัด

1/19 หมู่ 1 ต.พืชมพา อ.บางปะกง จังหวัด ฉะเชิงเทรา 24180 ประเทศไทย

TAX ID 0245554000604 LINE. @titanservice TEL. 038-989-373 ถึง 76

FAX. 038-989-377 Email. info.titanservice@gmail.com

Website. www.titanservice.co.th Facebook.com/Titanservicecompany